

A close-up photograph of an owl's face, showing its large, yellowish-brown eyes and its long, greyish-blue beak. The owl's mouth is open, revealing its pinkish-red tongue and the interior of its beak. The owl's feathers are a mix of brown and grey.

FUNDACIÓ ZOO DEL PIRINEU
IMPACT REPORT

2025

**WILDLIFE RESCUE &
REHABILITATION CENTRE
PYRENEES, SPAIN**

CONTENTS

- FOUNDER'S LETTER PAGE 3
- WHO WE ARE & OUR MODEL PAGE 4
- 2025 IMPACT – RESULTS IN NUMBERS PAGE 7
- RESCUE CENTRE – ACTING WITH PROFESSIONAL CRITERIA PAGE 8
- SANCTUARY – TAKING RESPONSIBILITY PAGE 12
- CONSERVATION PAGE 16
- ENVIRONMENTAL EDUCATION – LEARNING TO CARE PAGE 18
- COMMUNICATION & PUBLIC IMPACT PAGE 23
- FINANCIAL TRANSPARENCY & SUSTAINABILITY PAGE 24
- CONTACT PAGE 29

FOUNDER'S LETTER



STANIA KUSPERTOVA - FOUNDER & DIRECTOR

Every day in our region of the Pyrenees, wild animals are electrocuted, hit by cars, or found severely injured. Many cases would go unattended.

When that happens, someone has to act.

Zoo del Pirineu exists for that moment. We rescue, rehabilitate and, when release is not possible, we commit for life.

But rescue alone is not enough. If we only treat the consequences, the problem repeats itself. That is why we also educate. We open our doors to show what happens when ecosystems are fragmented and wildlife pays the price.

Wildlife rescue in Spain receives very limited institutional support. Centres like ours rely largely on private donors to continue operating. Our model is independent, practical and measurable.

This report does not describe intentions. It shows what we have done — and why it works.



WHO WE ARE



OUR MODEL

- Rescue, sanctuary and education in one space
- Professional, evidence-based criteria
- A community that sustains the work
- Honest communication — no inflated claims
- Long-term consistency and responsibility

WHO WE ARE

We operate as one integrated system combining wildlife rescue, long-term sanctuary and environmental education. We are not a traditional zoo. We do not buy or trade animals. Every individual in our care has arrived due to injury, orphaning or because release into the wild was not possible.

The project is led by a professional team with expertise in wildlife veterinary care, biology, education, communication and management.

Our internship programme is part of our model. We train future professionals so that responsible wildlife care extends beyond our centre.

Around us, a strong network of individuals and companies supports this way of working — based on rigour, transparency and long-term commitment.

We think long term. Every decision has real consequences for animals and for people.

LEARNING TO CARE

Protection of nature does not begin in offices.

OUR PURPOSE

We work to build a community that respects nature and understands the fragile balance that sustains our environment — a community willing to defend it.

For us, wildlife protection means far more than discussing problems.

- It is a transformative way of living.
- It is the education of the next generation.
- It begins locally, but its consequences reach far beyond our borders.

This is the heartbeat of Zoo del Pirineu.



2025 IMPACT AT A GLANCE

ANIMALS

529

RESCUED

320

RETURNED TO THE WILD

237

RECEIVING LIFELONG CARE

PEOPLE

13.926

VISITORS

108

SCHOOLS

COMMUNITY

269

SUPPORTING MEMBERS

213

ANIMAL SPONSORS

8

CORPORATE PARTNERS

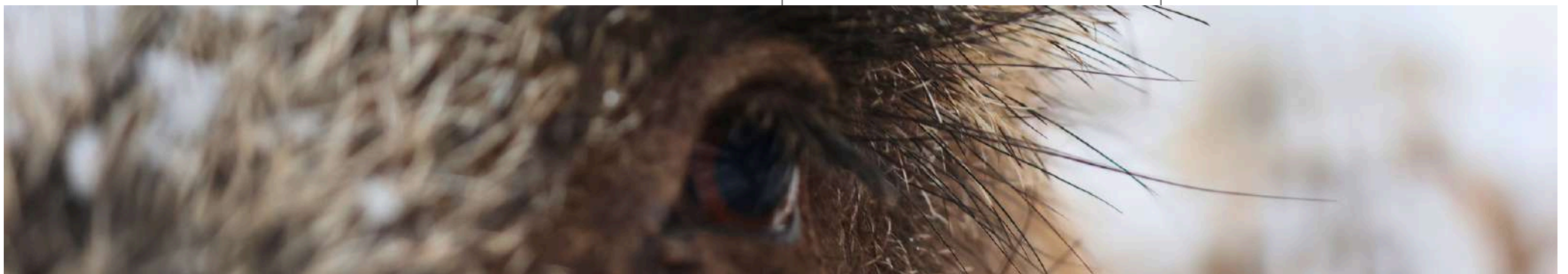
GROWTH

+12 %

INCREASE IN INCOME

20 %

OF TOTAL INCOME FROM
PRIVATE DONATIONS





RESCUE

RESCUE

A wild animal is found injured. We receive the call.

From that moment, we take responsibility. We organise transport and secure admission to the centre.

Each case is assessed individually by our veterinary team, evaluating the animal's condition and the realistic possibilities for recovery.

If release is possible, we follow a rigorous rehabilitation process, respecting natural behaviour and avoiding human dependency.

If release is not viable, we prepare adapted enclosures and long-term welfare protocols to ensure a dignified life.

And when there is no real prospect of recovery, we make the most difficult decision with professional judgement and responsibility. Caring also means knowing when to decide.



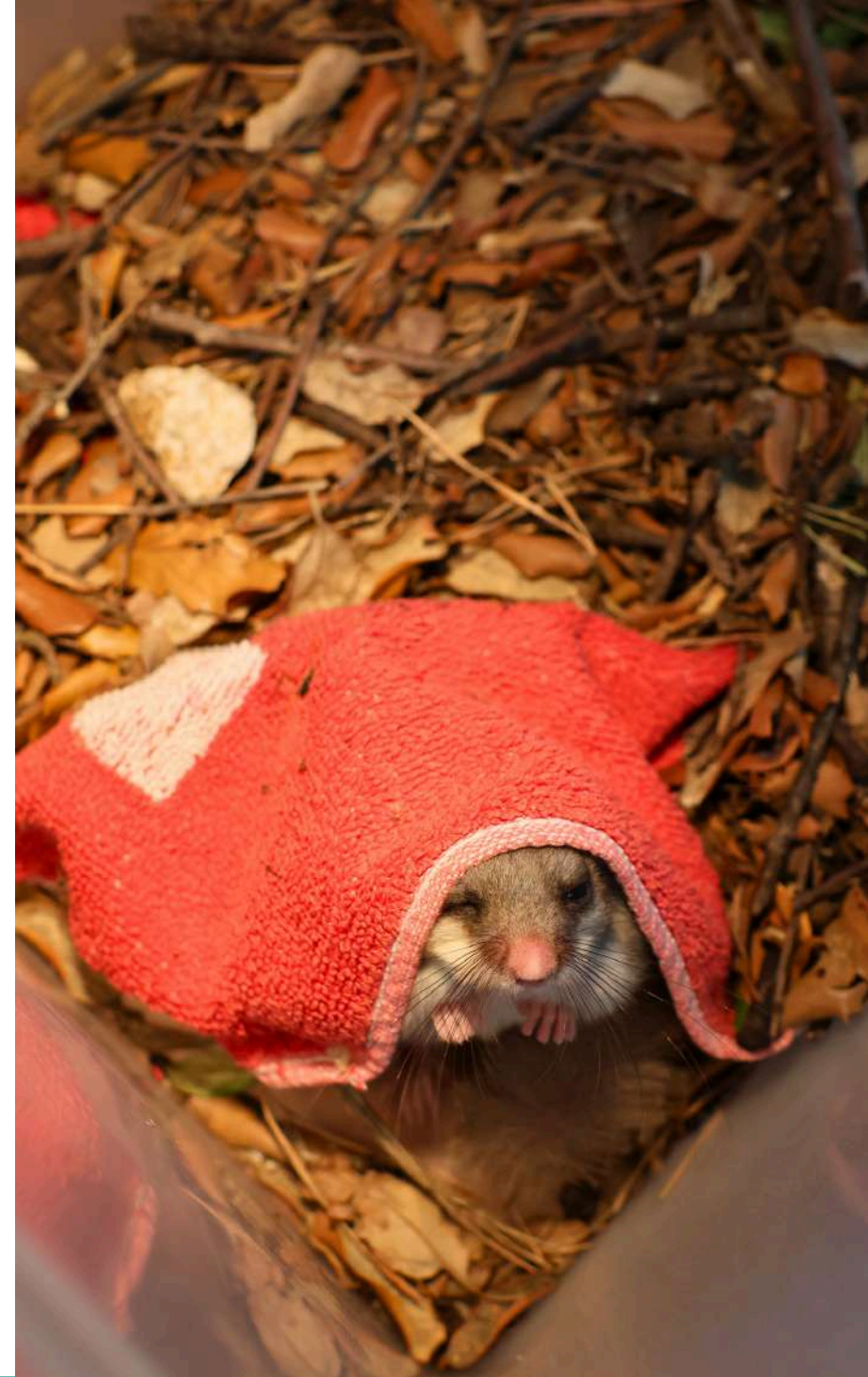
THE SCALE OF RESCUE

529 ANIMALS ADMITTED IN 2025 25 DIFFERENT SPECIES

- 312 returned to the wild (59%)
After completing the full rehabilitation process.
- 46 remain at the refuge (9%)
Unable to be released, but provided with lifelong care.
- 112 transferred to specialised centres (2%)
When specific facilities were required.
- 159 could not be saved (30%)

Transparency Note

In wildlife rescue, not all centres publish the full outcome of every case. In this report, we include all animals admitted – without exclusions.



Four Outcomes – Four Realities



RETURNED TO THE WILD

Mikki – Red fox cub

Found alone, weak and suffering from digestive complications. At the refuge he received controlled feeding and monitoring until stabilised. Raised alongside another orphaned fox to prevent human imprinting, he was released back to the wild once fully independent.



LIVING AT THE REFUGE

Wonder – Roe deer

Found at just a few days old with permanent visual impairment. Survival options in the wild were extremely limited. Today he lives safely with other resident deer. He cannot be released, but he has space, stability and lifelong care.



TRANSFERRED TO SPECIALISED CENTRES

Peregrine falcon

Admitted dehydrated and severely underweight after a nest attack. Once stabilised, the falcon was transferred to a specialised wildlife centre to complete rehabilitation alongside others of the same species. We collaborate nationally to ensure each animal receives the most appropriate care.



COULD NOT BE SAVED

Mallard ducklings

Seven ducklings arrived after being found inside a water treatment facility, covered in chemical residue. Despite emergency care, not all survived. Five recovered and were later released. We do not always arrive in time. Transparency means acknowledging that reality.



SANCTUARY

SANCTUARY

Not all animals can return to the wild.

Some arrive with irreversible injuries. Others are born with limitations that make survival in nature impossible.

When that happens, responsibility does not end. It changes. Each animal is provided with a space adapted to its species and individual needs. Routines are stable. Observation is continuous.

Decisions here are never easy. They are made carefully, prioritising welfare and long-term stability.

Sanctuary requires space, time and resources. It also requires consistency. Care does not end with rescue. In some cases, it becomes a lifelong commitment.



A REAL RESPONSIBILITY

When animals cannot return to the wild, responsibility does not end. We care for those who cannot be released — whether legally protected or not.

- **237 ANIMALS CURRENTLY LIVE AT THE REFUGE.**
- **FROM 57 IBERIAN NATIVE SPECIES.**

Here they find:

- Spaces adapted to their specific needs
- Stable routines designed for welfare
- Quiet environments based on respect

Sanctuary is a long-term commitment.



119 animals
not legally protected



73 animals
legally protected



45 domestic animals
in permanent care

GROWING TO RESPOND

The refuge is not a static space. It evolves to meet new needs.

In 2025, we expanded several facilities to increase our rescue capacity and improve long-term spaces for animals who will remain with us for life. Each step has a clear objective: to respond to more cases without compromising welfare standards.



PRE-RELEASE ENCLOSURES

These new facilities allow us to admit more animals and refine rehabilitation before release, ensuring proper preparation for life in the wild.



NEW SPACE FOR MURRI

Murri is an inquisitive red fox, always alert and active. His new enclosure stimulates his natural behaviours and provides daily enrichment.



CONSERVATION

Conservation does not happen only within the refuge. It is part of coordinated work with research institutions, scientists and environmental organisations operating across the region. Zoo del Pirineu actively participates in monitoring and conservation initiatives in Catalonia, north-east Spain.



EUROPEAN WILDCAT MONITORING

We collaborate in the scientific monitoring of a key nocturnal predator increasingly rare in our territory and essential for ecosystem balance.



BARN OWL REINTRODUCTION

We are an authorised breeding centre for the release and recovery of the barn owl, an emblematic species now absent from many areas of Catalonia.



RIVER ECOSYSTEM ASSESSMENT

We participate in Project Rius, a citizen-science initiative monitoring river health and evaluating the ecological status of freshwater ecosystems in Catalonia.



EDUCATION

ENVIRONMENTAL EDUCATION

Nothing here happens without purpose. Every activity at Zoo del Pirineu serves two objectives: to care for animals and to build awareness grounded in real cases. We focus on understanding the impact of human decisions — and acting accordingly.



EDUCATION

Activities are based on real cases from the refuge and on respectful, responsible interaction with wildlife.



PEOPLE

Direct contact with animals affected by human action helps visitors understand that their choices matter.



ANIMALS

Programmes are designed by professionals to encourage natural behaviours and promote long-term welfare.



SUSTAINABILITY

Educational activities contribute directly to funding the refuge, ensuring continued care for animals in permanent residence.

SCHOOLS

In 2025, environmental education remained a strategic pillar of our work. 3,231 students visited the refuge and experienced first-hand the reality of wildlife in our region. We do not speak about nature in theory. We present real cases — animals affected by human decisions — and explain why every choice has consequences.

HOW IT WORKS

- Schools visit the refuge
- We deliver sessions directly in educational centres
- We participate in residential camps and educational programmes



FAMILY VISITS

Zoo del Pirineu is open to the public, but visits follow a model aligned with our working principles.

All visits are guided and conducted in small groups. This ensures a meaningful experience for visitors and a calm environment for the animals living at the refuge.

This format allows families, groups and companies to understand a real project: how complex decisions are made, how animal welfare is prioritised and how conservation work is carried out responsibly within the territory.

In 2025, we introduced a new visit format. On selected days, the refuge closes to the general public and is dedicated entirely to a single group.

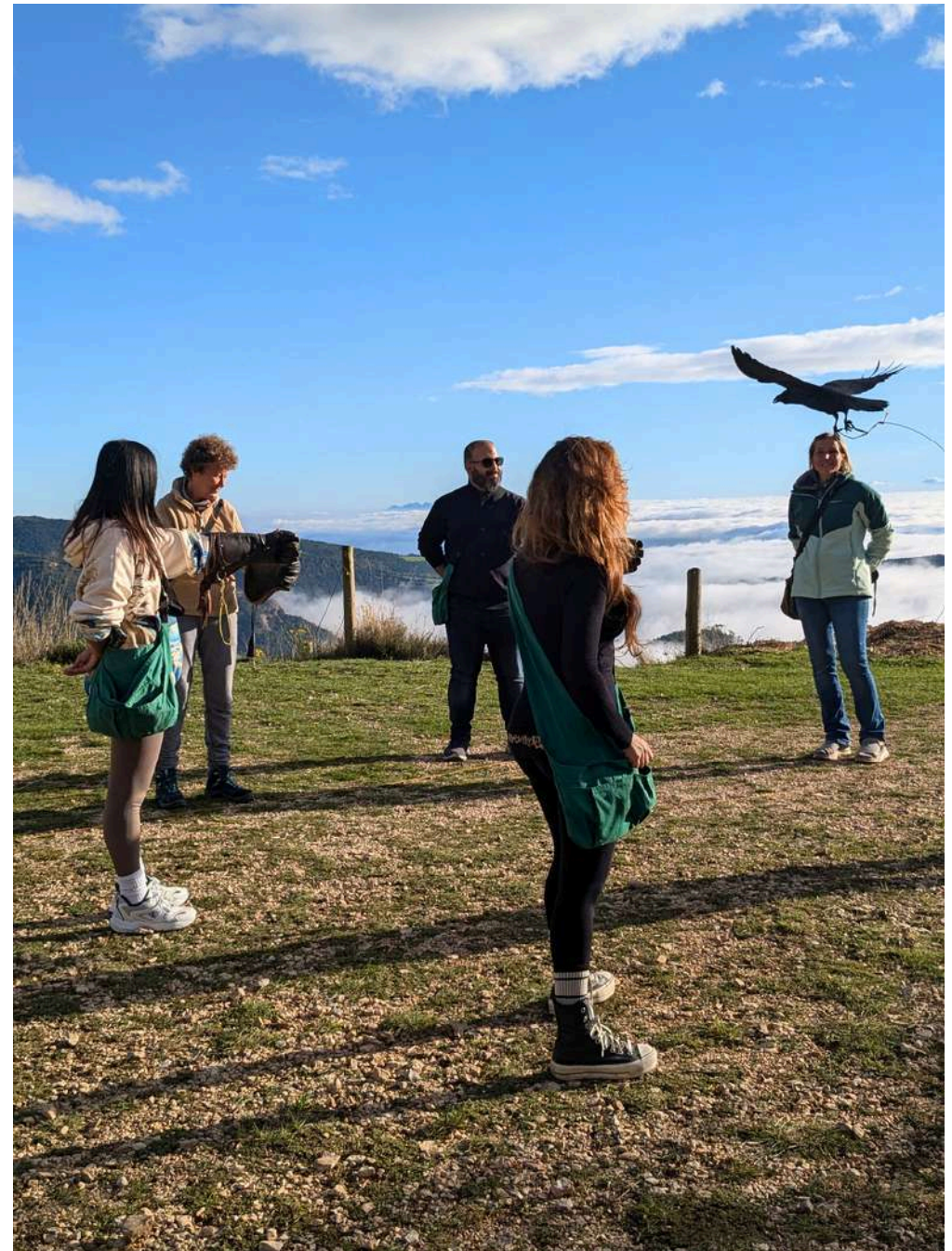


COURSES

At Zoo del Pirineu, we offer training directly connected to our daily work with wildlife.

Our falconry course teaches participants how to handle birds of prey responsibly, understanding the respect, discipline and self-control required when working with wild animals. It combines technical knowledge, teamwork and personal development.

Our practical wildlife rehabilitation course is designed for both sector professionals and individuals seeking deeper knowledge in this field. Working with real cases from the centre, participants learn how animals are assessed, how decisions are made and what responsibility recovery truly entails.



COMMUNICATION & PUBLIC IMPACT

Communication is part of our responsibility. We show what happens at the rescue centre and the refuge as it truly is.

In Spain, wildlife conservation receives limited public attention and minimal structural support. Many of the realities we encounter remain largely unseen. Making them visible is part of our work.

We share rescues, difficult decisions and daily realities openly and consistently. This continued communication brings the reality of wildlife rescue closer to thousands of people and helps build understanding where there is still a significant gap.

Beyond our active presence on social media, the project has been featured in television, press and digital media, giving visibility to a field that remains underrepresented.





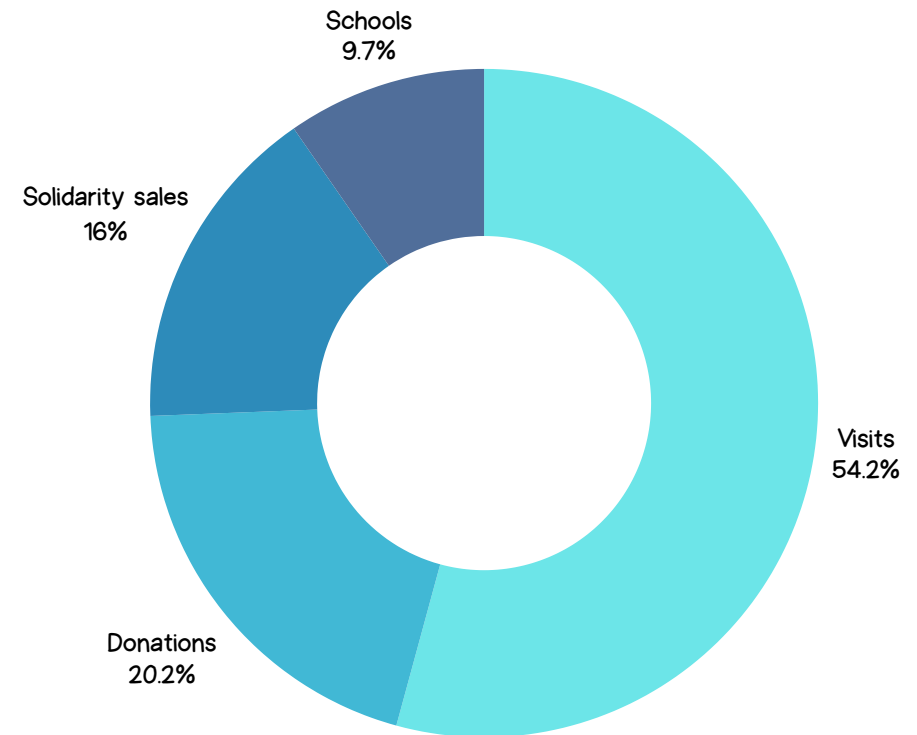
FINANCES

INCOME 2025

€360,912

Zoo del Pirineu is sustained primarily through educational activities and guided visits, complemented by solidarity sales and direct support from individuals who believe in our work.

In 2025, total income increased by 12% compared to the previous year.

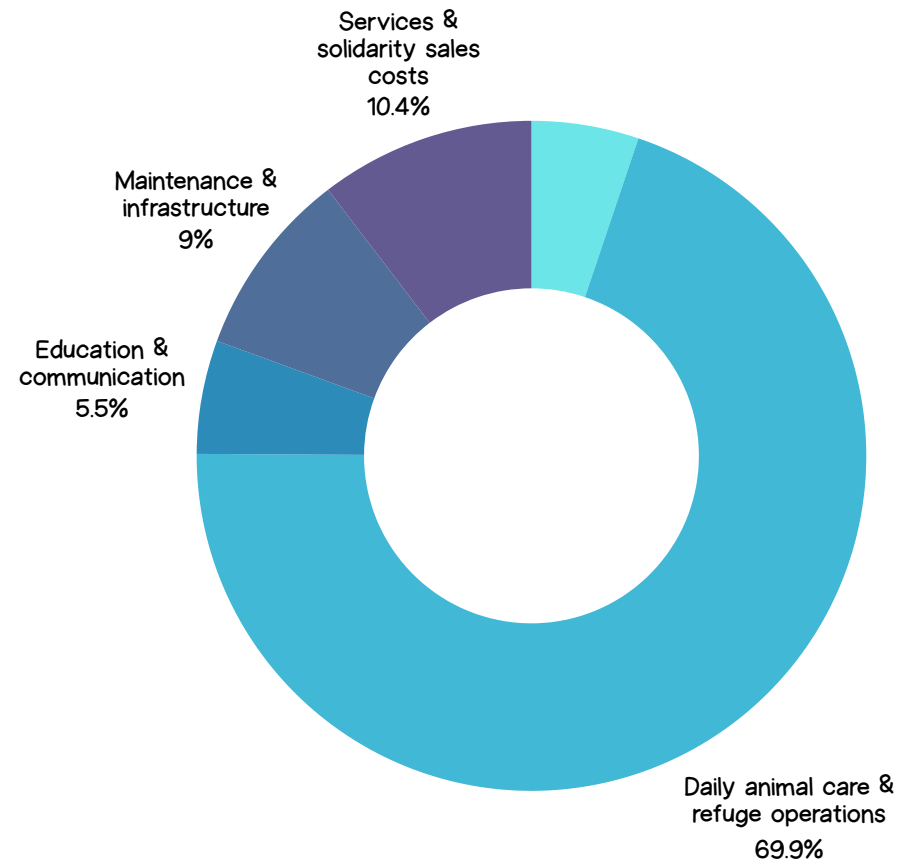


EXPENSES 2025

€362,125

The majority of our resources are allocated directly to animal care and the daily operation of the refuge. Our priority remains clear: safeguarding welfare and ensuring the continuity of the project.

In 2025, the year closed with a small deficit, consistent with a period of investment and growth.



CONTINUITY

The work of Zoo del Pirineu does not end with a rescue, a release or the closing of a financial year. It continues every day.

- With animals who remain under lifelong care
- With conservation projects that require time and consistency
- With education and communication that build a more responsible relationship between people and wildlife

In Spain, long-term structural support for wildlife rescue remains limited. Continuity depends largely on independent organisations and the people who choose to sustain them.

Continuity requires structure, professional teams and consistency.



COMMUNITY

Rescue does not begin or end within a fenced space. It begins when someone chooses to act.

Sponsors who commit long term.

Schools that engage.

Companies that provide support.

A team present every single day.

Protecting wildlife is not a one-time effort. It is shared work, rooted in this territory and sustained over time. In Spain, where structural support for wildlife remains limited, community is not complementary — it is essential.

Thank you for being part of it.



Phone: +34 610 75 02 24
Email: zoopirineu@gmail.com
WhatsApp: +34 610 75 02 24

Ctra. L-401, km 35,6
25283 Odèn / Catalonia / Spain

